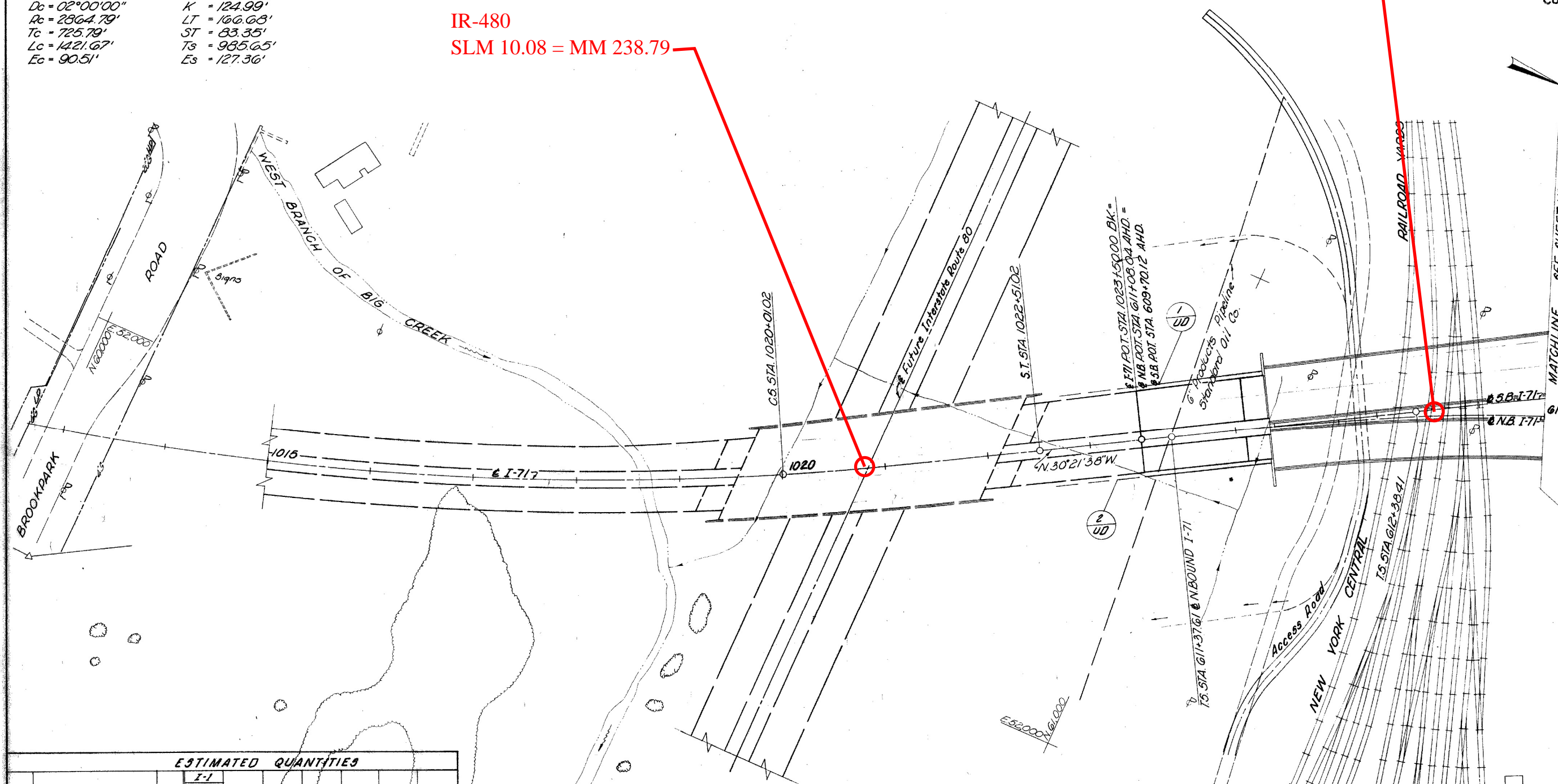


44

P.I. STA 1013+15.00	Ls = 250.00'
$\Delta = 33^{\circ}26'00''$ LT	$\Delta s = 02^{\circ}30'00''$
$\Delta c = 28^{\circ}26'00''$ LT	$P = 0.91'$
$D_c = 02^{\circ}00'00''$	$K = 124.99'$
$R_c = 2864.79'$	$LT = 166.68'$
$T_c = 725.79'$	$ST = 83.35'$
$L_c = 1421.67'$	$T_s = 985.65'$
$E_c = 90.51'$	$E_s = 127.36'$

IR-480
SLM 10.08 = MM 238.79

GCRTA/RR
SLM 10.16 = MM 240.18



ESTIMATED QUANTITIES			
REF NO.	STATION TO STATION	SIDE	$\frac{I-1}{CLTS}$ 6" LIN. FT.
1-UD	S.D. 609+70.12 ~ 610+32	LT.	122
2-UD	N.B. 611+08.04 ~ 612+30	RT.	122
TOTALS			244

For Access Road See Sheet No. 42